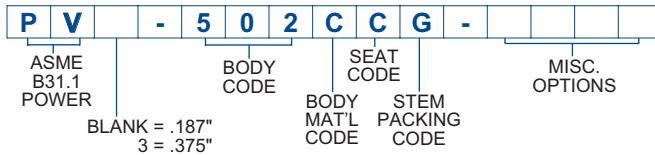


Hand Valves

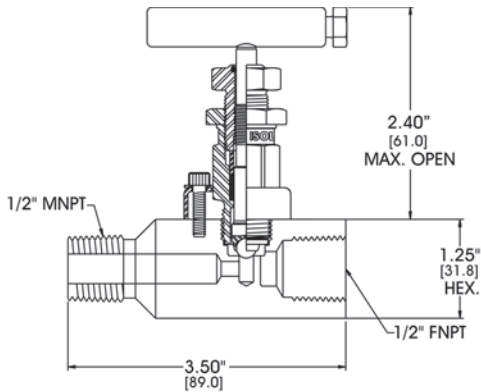
.187" .375" ORIFICE

ASME B31.1 2500# CLASS

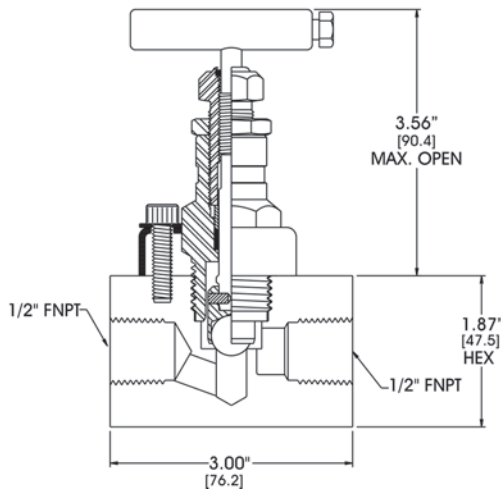
HAND VALVES



PV-506



PV3-508



Notes

- 100% hydrostatically pressure tested 1.5 times the design pressure to exceed B16.34 requirements
- Roddable .375" orifice 316 SS cone seat available - Consult Factory
- OS&Y bonnet style available
- PGI Carbon Steel products are Alkaline cleaned and coated with Zinc Phosphate solution; rust preventative solution applied

ORDERING INFORMATION

PART NO.	CONNECTIONS		BODY	SEAT & PACKING
	INLET	OUTLET		
.187" Orifice				
PV-502CCG	¼" FNPT	x ¼" FNPT	A105 Carbon Steel	Carbide Ball Seat Low-Torque™ Grafoil® Packed
PV-502SCG			316 SS	
PV-506CCG	½" MNPT	x ½" FNPT	A105 Carbon Steel	
PV-506SCG			316 SS	
PV-508CCG	½" FNPT	x ½" FNPT	A105 Carbon Steel	
PV-508SCG			316 SS	
PV-528SCG	¾" MNPT	x ½" FNPT	316 SS	
PV-540SCG	¾" FNPT	x ¾" FNPT	316 SS	
PV-588SCG	3/8" FNPT	x 3/8" FNPT	316 SS	
.375" Orifice				
PV3-508CCG	½" FNPT	x ½" FNPT	A105 Carbon Steel	Carbide Ball Seat
PV3-508SCG			316 SS	
PV3-540CCG	¾" FNPT	x ¾" FNPT	A105 Carbon Steel	Grafoil® Packed
PV3-540SCG			316 SS	
Carbon Steel Rated to 6170 PSI @ 100°F -- 3430 PSI @ 800°F 316 SS Rated to 6000 PSI @ 100°F -- 2915 PSI @ 1000°F See Pressure & Temperature Chart on Page 4.				
OPTION CODE	DESCRIPTION			
Seat Material Options				
6	316 SS Ball Seat			
R	Ceramic Ball Seat			
S	Stellite Ball Seat			
Miscellaneous Options				
AM7	Male Pipe Socket Weld - Male Inlet Only			
AS7	Welded Tube Stub 6" Length Standard (Process Port)			
ST	Throttling Stem Tip (316 SS Standard)			
W1	316 SS Tag (20 Characters)			
WK	Paper Tag			
Y	OS & Y Bonnet			

Materials of Construction

PART DESCRIPTION	CARBON STEEL	316 SS
Body	ASTM A105 CF	ASTM A479-316
Bonnet	ASTM A105 CF	ASTM A479-316
Stem	ASTM A479-316	ASTM A479-316
Yoke (OS&Y Bonnet)	ASTM A351-CF3M	ASTM A351-CF3M
Packing Follower	ASTM A479-316	ASTM A479-316
Bolt	ASTM A574	ASTM F837 GR1-CW
Handle Assembly	ASTM A108	ASTM A582 18-8
Lockplate	Stainless Steel 18-8	Stainless Steel 18-8
Stem Lock Pin	ASTM A479-316	ASTM A479-316

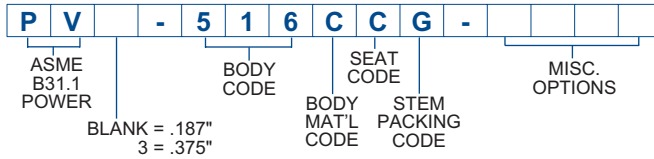
Max Cv Ratings

ORIFICE SIZE	MAX Cv RATINGS
.187"	.53
.375"	2.40
Approximate Valve Weight:	1.30 lbs. [0.58 kg] each [PV-502/506/508/528/588] 2.00 lbs. [0.91 kg] each [PV-540] 3.00 lbs. [1.36 kg] each [PV3-508/540]

Multi-Port Valves

.187" .375" ORIFICE

ASME B31.1 2500# CLASS



ORDERING INFORMATION

PART NO.	CONNECTIONS		BODY	SEAT & PACKING
	INLET	OUTLET		
.187" Orifice				
PV-516CCG	½" MNPT	x (3) ½" FNPT	A105 Carbon Steel	Carbide Ball Seat
PV-516SCG	Standard Length		316 SS	
PV-518CCG	¾" MNPT	x (3) ½" FNPT	A105 Carbon Steel	
PV-518SCG	Standard Length		316 SS	
PV-520CCG	½" MNPT	x (3) ½" FNPT	A105 Carbon Steel	Low-Torque™ Grafoil™ Packed
PV-520SCG	Extended Length		316 SS	
PV-532CCG	¾" MNPT	x (3) ½" FNPT	A105 Carbon Steel	
PV-532SCG	Extended Length		316 SS	
.375" Orifice				
PV3-516CCG	½" MNPT	x (3) ½" FNPT	A105 Carbon Steel	Carbide Ball Seat
PV3-516SCG	Standard Length		316 SS	
Grafoil™ Packed				
Carbon Steel Rated to 6170 PSI @ 100°F -- 3430 PSI @ 800°F 316 SS Rated to 6000 PSI @ 100°F -- 2915 PSI @ 1000°F See Pressure & Temperature Chart on Page 4.				
OPTION CODE	DESCRIPTION			
Seat Material Options				
6	316 SS Ball Seat			
R	Ceramic Ball Seat			
S	Stellite Ball Seat			
Miscellaneous Options				
AM7	Male Pipe Socket Weld - Male Inlet Only			
ST	Throttling Stem Tip (316 SS Standard)			
W1	316 SS Tag (20 Characters)			
WK	Paper Tag			
Y	OS & Y Bonnet			

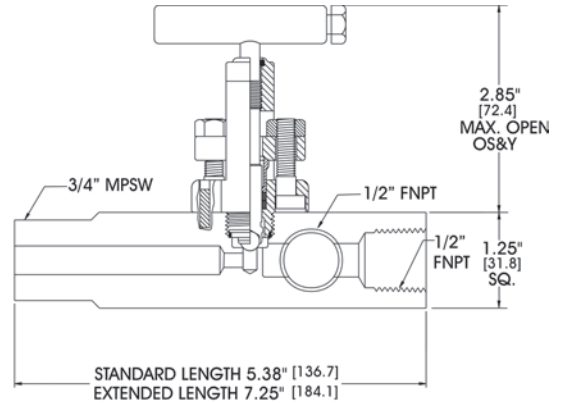
Materials of Construction

PART DESCRIPTION	CARBON STEEL	316 SS
Body	ASTM A105 CF	ASTM A479-316
Bonnet	ASTM A105 CF	ASTM A351-CF3M
Stem	ASTM A479-316	ASTM A479-316
Yoke (OS&Y Bonnet)	ASTM A351-CF3M	ASTM A351-CF3M
Packing Follower	ASTM A479-316	ASTM A479-316
Bolt	ASTM A574	ASTM F837 GR1-CW
Handle Assembly	ASTM A108	ASTM A581 18-8
Lockplate	Stainless Steel 18-8	Stainless Steel 18-8
Stem Lock Pin	ASTM A479-316	ASTM A479-316

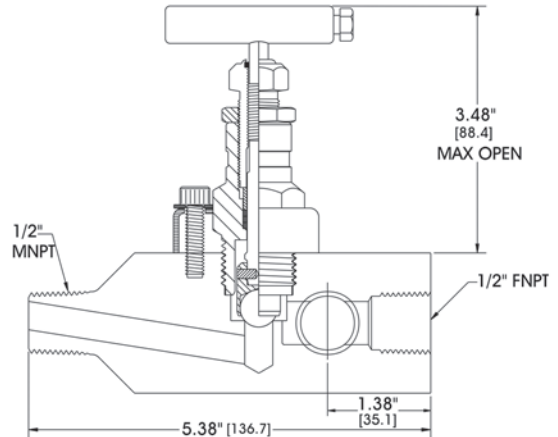
Max Cv Ratings

ORIFICE SIZE	MAX Cv RATINGS
.187"	.53
.375"	2.40
Approximate Valve Weight:	2.30 lbs. [1.04 kg] each [PV-516/518] 3.60 lbs. [1.63 kg] each [PV-520/532] 5.20 lbs. [2.36 kg] each [PV3-516]

PV-518



PV3-516



Notes

- 100% hydrostatically pressure tested 1.5 times the design pressure to exceed B16.34 requirements
- Roddable .375" orifice 316 SS cone seat available - Consult Factory
- OS&Y bonnet style available
- PGI Carbon Steel products are Alkaline cleaned and coated with Zinc Phosphate solution; rust preventative solution applied