

BATTERY CHARGERS

CONVERTING PIPELINE ENERGY TO BATTERY POWER

ISO 9001:2008 Certified Quality System

DB1
Differential
Pressure

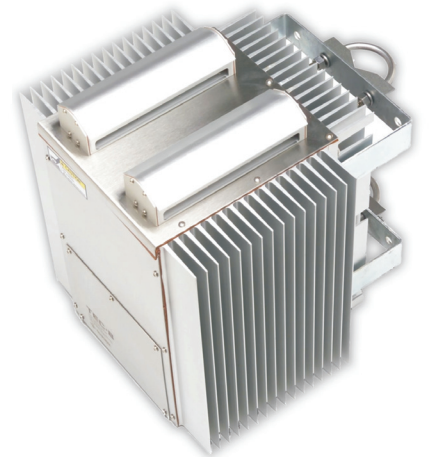
C-TEC
Catalytic
ThermoElectric

G-TEC
Glycol
ThermoElectric

Remote Pipeline
Power Solutions

Back-Up Power
Solutions

24/7 Uninterruptible
Power Solutions



PGI International
Excellence Through Innovation

BATTERY CHARGERS




**DB1™
Differential
Pressure
Battery Chargers**



**G-TEC™
Glycol
ThermoElectric
Battery Chargers**

**C-TEC™
Catalytic
ThermoElectric
Battery Chargers**

Features			
Output	10 or 20 watts 12 or 24VDC	2 or 8 watts 12 or 24VDC	2 or 8 watts 12 or 24VDC
Input Requirement	75 or 100 psi differential pressure min. 16 - 22 scf/m flow	325° - 375° F glycol at 4 gpm flow rate min.	Clean & dry natural gas
Inlet Gas Supply Pressure	1440 psig max.	N/A	250 psig max.
Consumption	None	None	1 - 3 scf/hr
Emission	None	None	CO ₂ and H ₂ O Vapor
Size	7" w x 10" d x 12" h	12" w x 13" d x 14" h	12" w x 13" d x 14" h
Weight	15 lbs.	22 or 50 lbs.	25 or 55 lbs.
Temperature Compensation	Yes	Yes	Yes
Mounting	Direct/Pole Mount	Pole/Panel Mount	Pole/Panel Mount
Microprocessor Controlled	Yes	Yes	Yes
User-Configurable Alarm Output	Yes	Yes	Yes
Solar Panel Equivalent @ 3 Hours Sunlight	100 or 175 watts	30 or 75 watts	30 or 75 watts
Hazardous Approvals	Class I, Division 1	Class I, Division 2	Class I, Division 2
 CSA Approved	Yes	Pending	Yes

Patent # 6,712,601 B1
Other Patents Pending

PGI International provides this information in good faith, and it is intended only as an informative guide to PGI International products and services. Individuals using this literature must exercise their independent judgment in evaluating product selection and determining product appropriateness for their particular purpose, system requirements and certifications. PGI International reserves the right to change product designs and specifications without notice.



PGI International
Excellence Through Innovation

16101 Vallen Drive • Houston, TX 77041 USA
713-466-0056 • 1-800-231-0233 • Fax: 1-800-568-9228
sales@pgiint.com • www.pgiint.com

© PGI International, 2010 [6-8-10, Rev. 2]